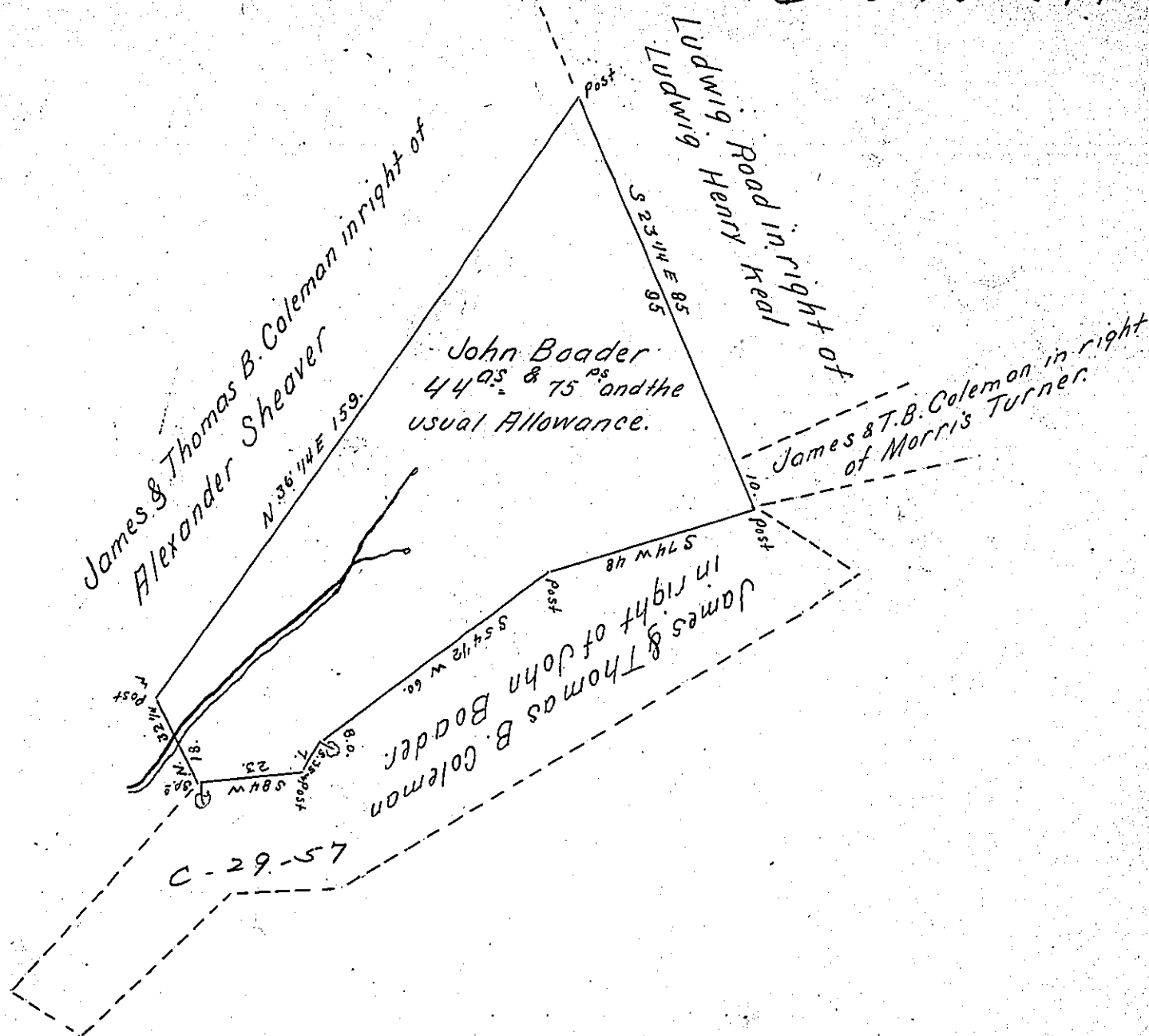


Sec - A - 1 - 34 & C - 29 - 57 278  
 & D - 40 - 241



A draught of a Tract of Land Situate in Heidelberg Township Lebanon County Containing Forty four acres and Seventy five perches and the usual Allowance of six per cent for roads part of 70 = 110 & the usual Allowance of six per cent for roads. Surveyed to John Boader on his Application N<sup>o</sup> 917 dated the 23<sup>d</sup> of September 1765 &c. Surveyed the above Tract of Land the 3<sup>d</sup> May 1819 for Peter Eckert

To Gabriel Hiester Esqr. } pr. Jacob Hibshman D. S.  
 Surveyor General } Lancaster County

I Approve of the above Survey to be Accepted in the Surveyor Generals Office June 17<sup>th</sup> 1829

To Gabriel Hiester Esqr. } Tob<sup>s</sup> Kreider Jr. D. S.  
 Surveyor General } for Lebanon County

IN TESTIMONY that the above is a copy of the original remaining on file in the Department of Internal Affairs of Pennsylvania, made conformably to an Act of Assembly approved the 16th day of February, 1833, I have hereunto set my Hand and caused the Seal of said Department to be affixed at Harrisburg, this twenty third day of September 1904.

*James R. Brown*  
 Secretary of Internal Affairs.